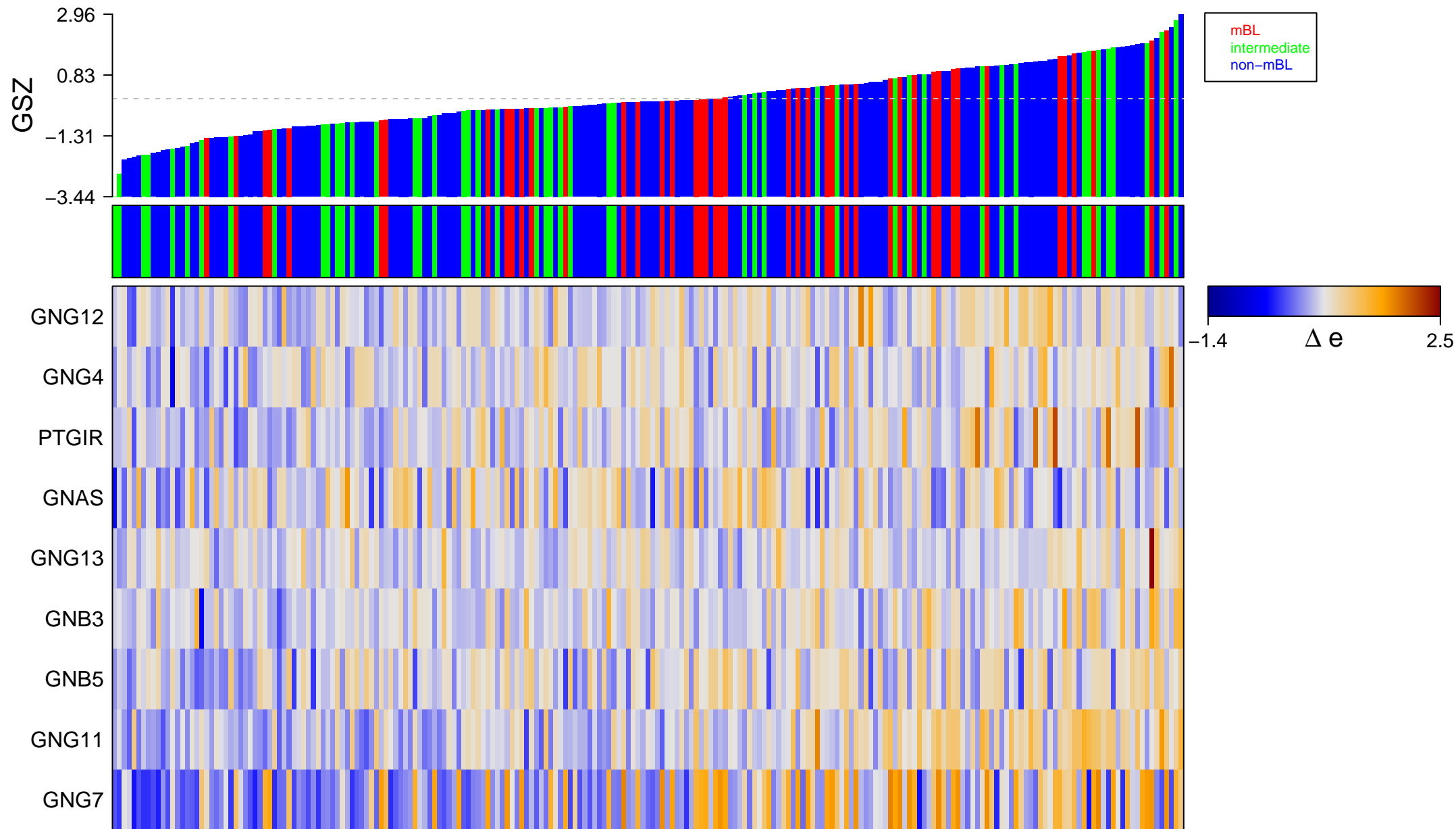
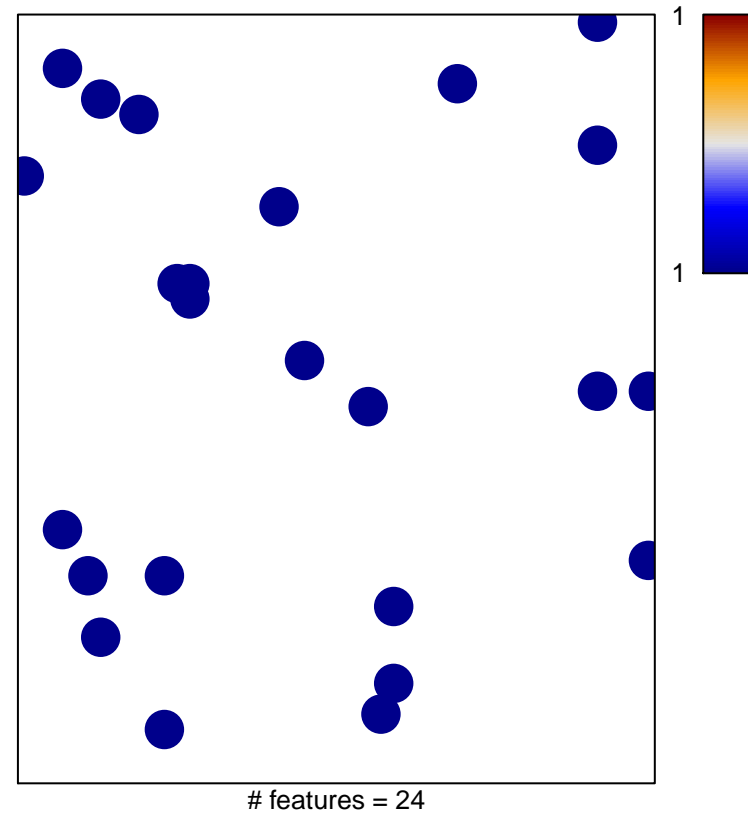
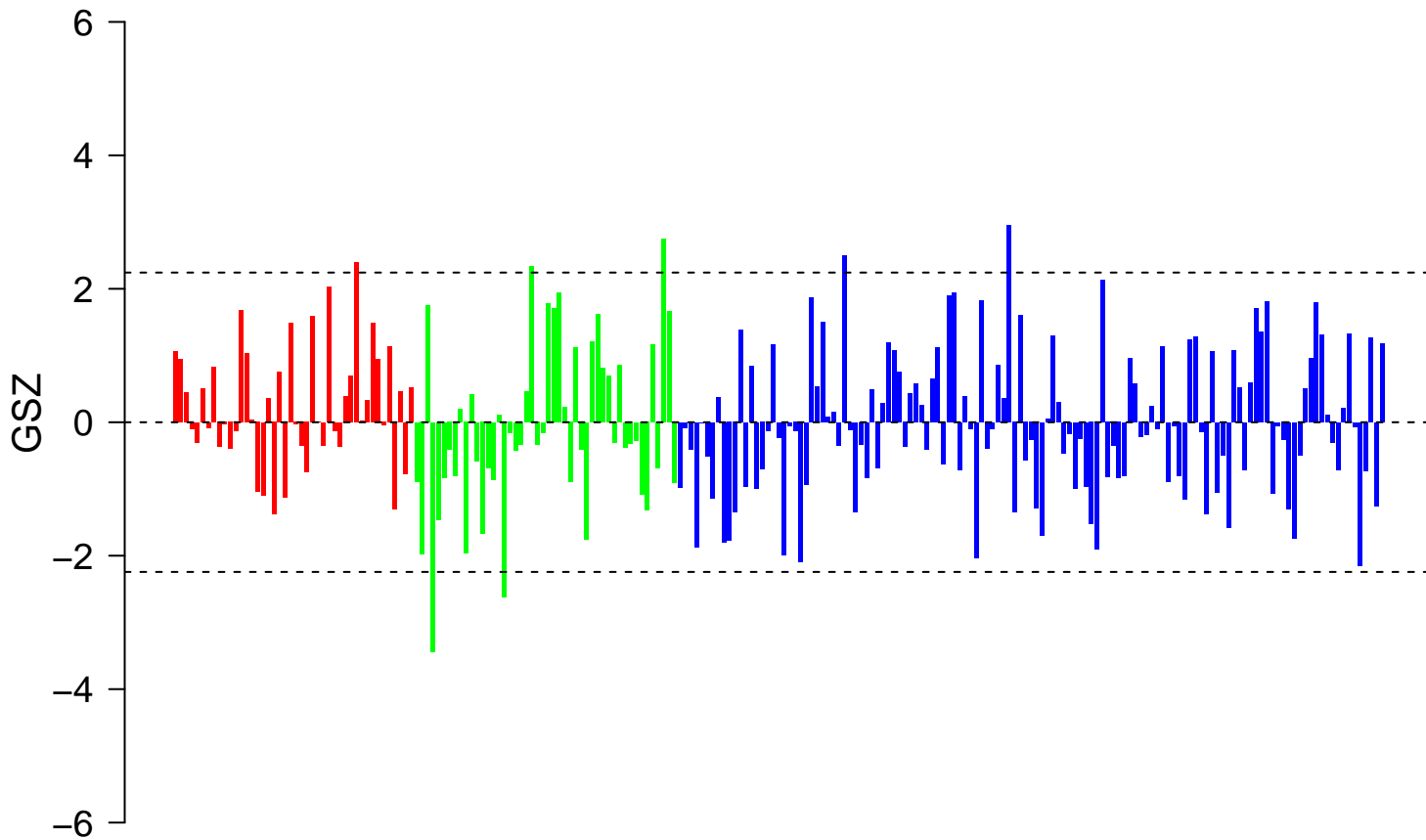


# REACTOME\_PROSTACYCLIN\_SIGNALLING\_THROUGH\_PROSTACYCLIN\_RECEPTOR



# OME\_PROSTACYCLIN\_SIGNALLING\_THROUGH\_PROSTACYCLIN\_RECEPTOR



■ on  
■ -  
□ off



# REACTOME\_PROSTACYCLIN\_SIGNALLING\_THROUGH\_PROSTACYCLIN\_RECEPTOR

